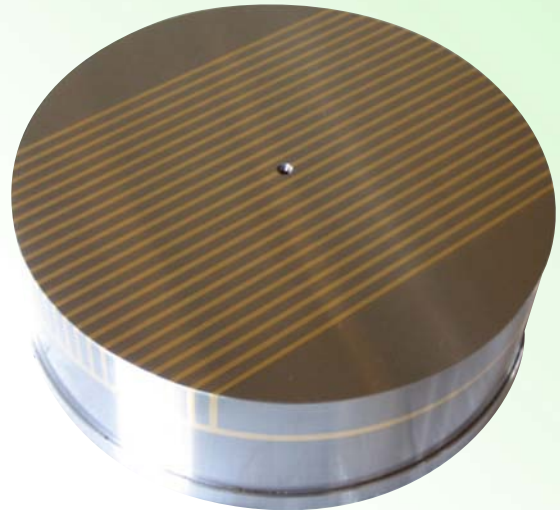




Ningbo Realpower Magnetic Industry Co.,Ltd.

RMF SERIES

Fine Pole Round Magnetis Chuck



With fine parallel pole pitch $P = 1+3$ mm Pole pitch:
steel 3 mm, brass 1 mm

Use:

Clamping of small and thin
to medium-sized workpieces.

Features:

Extremely low height due to use of neodymiumiron-
boron magnets.

Pole pitch $P = 4$.mm.

Nominal holding force: 80 N/cm²

Magnetic field height: 8 mm

Pole plate wearing limit: 5 mm

Pole pitch: steel 3 mm, brass 1 mm

We can also design and produce as
client's requirements

Specifications

Model	Dimensions(mm)					Weight in kg
	A	B	C	D	E	
RMF125	125	55	100	112	M6(4x)	4.5
RMF160	160	55	125	140	M8(4x)	7.5
RMF200	200	55	160	180	M8(4x)	12.0
RMF250	250	55	200	224	M10(4x)	18.0
RMF300	315	55	250	280	M10(4x)	29.0
RMF350	350	55	280	310	M10(4x)	33.0
RMF400	400	55	315	355	M10(4x)	47.0

other size on requst

